



Edmonton: Monday, June 1, 2026 (08:00AM – 04:00PM)

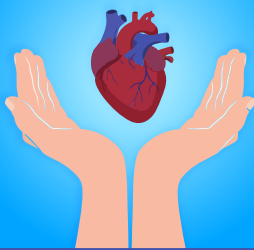
Edmonton Inn Kingsway

Heart Failure Update



CHRISTOPHER COLTMAN
RN, BSCN

HEART FAILURE



Save **\$30** until *March 16!* Group discounts available!

healthlinksed.ca

- A Review of Relevant Cardiovascular A & P
- How the Continuum of Heart Failure evolves
- Risk Factors for the Development of Heart Failure
- Physical Assessment of the Heart Failure Patient
- Life in the Big Apple – New York Heart Association Classification Review
- Methods of Heart Failure Diagnosis
- Overview of current therapies & Rx for HF using guideline-directed medical therapy (GDMT)
- Advanced therapies including Cardiac Re-Synchronization Therapy (CRT) Explained
- Profiles of Advanced Heart Failure: INTERMACS Scoring Explained
- A Review of the Treatment of the Patient in Cardiogenic Shock
- Indications and techniques of cardiac transplantation
- Palliative care and the heart failure patient

Includes:

- Coffee & Tea
- Lunch (*Soup, Salad, & Sandwich Buffet*)
- Printed Handouts
- Certificate of Completion for 6.5 Hours of CE